

## Foam Tiles

The soft Play Mat tiles we are proposing are the ideal protective flooring for playrooms. They are available in four colours red, yellow, blue and green. The tiles come in two different thicknesses 15mm and 25mm and are available in three different sizes 30cm x 30cm, 60cm x 60cm (available in 15mm thickness) and 120cm x 120cm (available in 25mm thickness) Edges and corners are available in 15mm thickness. The tiles can be installed both on the floor as well as on the walls to prevent knocks and bumps.

The Play Mats have an interlocking edge which makes them very easy to install without the need of glue. They are made from high density, micro – cellular EVA foam with an anti slip top surface. The Play mats are lightweight and easy to clean.

Soft  
Flexible  
Durable



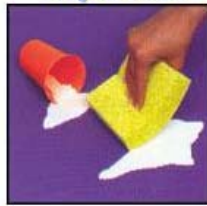
Easy to Assemble  
Stays Connected  
Multiple Colors



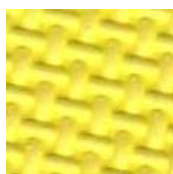
Lightweight  
Portable  
Easy to Store



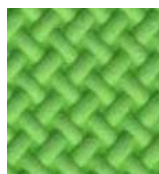
Waterproof  
Odor Proof  
Easy to Clean



Red



Yellow



Green



Blue

